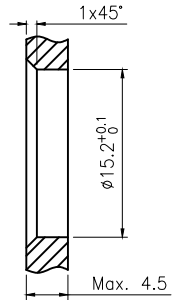
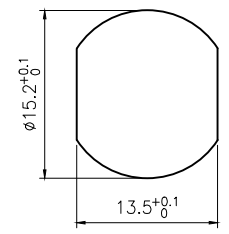
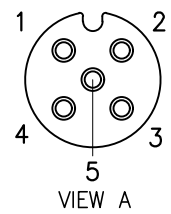
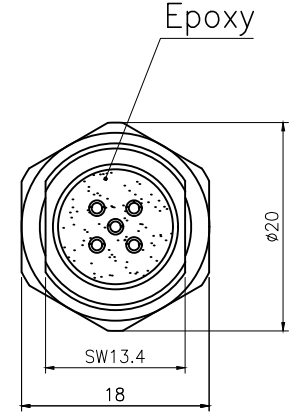
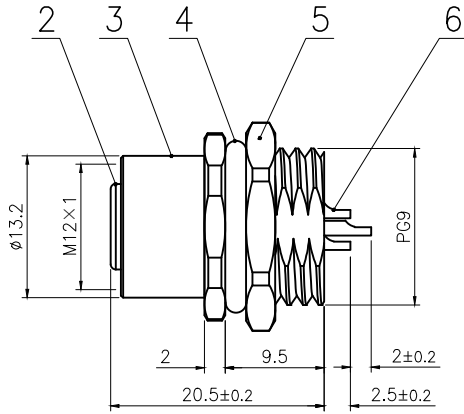
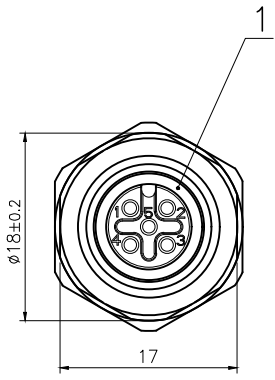



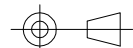
| | | | |
|------|--------------------|-------|------|
| Rev. | Change Description | ECN # | Date |
| | | | |



面板开孔尺寸

| 6 | M12 1.0 焊线式母针 | 磷铜 | 镀金 | pc | 5 |
|-----|---|----------|-------|------|------|
| 5 | 六角螺母PG9 | 黄铜 | 镀镍 | pc | 1 |
| 4 | M12 法兰座外壳专用O型圈 $\phi 16 \times 2$ | 橡胶 | / | pc | 1 |
| 3 | M12 板前安装插座母头外壳 PG9规格 | 黄铜 | 镀镍 | pc | 1 |
| 2 | M12 带倒角常规母胶芯 5芯 | 尼龙 | / | pc | 1 |
| 1 | M12 母头胶芯O型圈 $\phi 9 \times \phi 6 \times 1.5$ | 橡胶 | / | pc | 1 |
| No. | Specification | Material | Treat | Unit | Q'ty |

| 技术参数 | | 材料 | |
|---------------|---------------|--------|----------|
| 连接方式: | 螺纹连接 | 外壳材料: | 黄铜, 镀镍 |
| 接线方式: | 焊线 | 接触体材料: | 磷铜, 镀金 |
| 编码: | A | 绝缘体材料: | 增强尼龙, 黑色 |
| 污染等级: | 3 | 密封材料: | 橡胶, 黑色 |
| 温度范围: | -40°C ~ +80°C | | |
| 防护等级: | IP67 | | |
| 插拔周期: | ≥500 | | |
| 额定电压: | 60V AC/DC | | |
| 额定电流: | 4A | | |
| 接触电阻: | ≤5 mΩ | | |
| 绝缘电阻: | ≥100 MΩ | | |
| 所有材料均符合RoHS要求 | | | |

| | | | |
|---|--------|---------------|---|
| GENERAL TOLERANCE (UNLESS SPECIFIED) ≤10 ±0.1 <10~≤20 ±0.2 <20~≤50 ±0.5 Angle ±1° | DWN | DATE |  |
| | W.M | 2022.8.24 | |
| | CHK | DATE | |
|  THIRD ANGLE | APVD | DATE | TITLE M12 板前安装孔型带倒角插座 5芯 PG9规格 |
| | UNIT | REV | PART NO |
| | MM | A | 120053-05A000000 |
| SIZE | SHEET | DRAWING NO | |
| A4 | 1 OF 1 | M12-CB-S5-PG9 | |